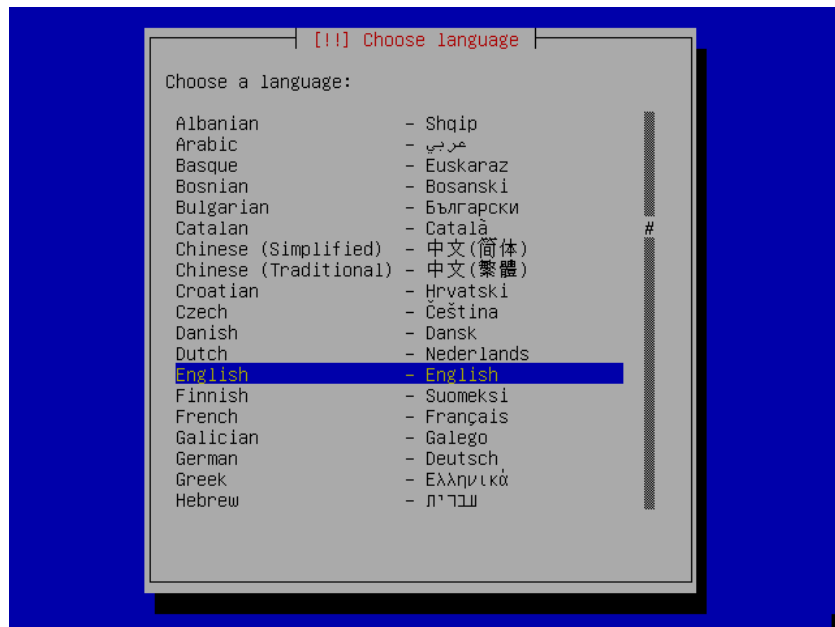


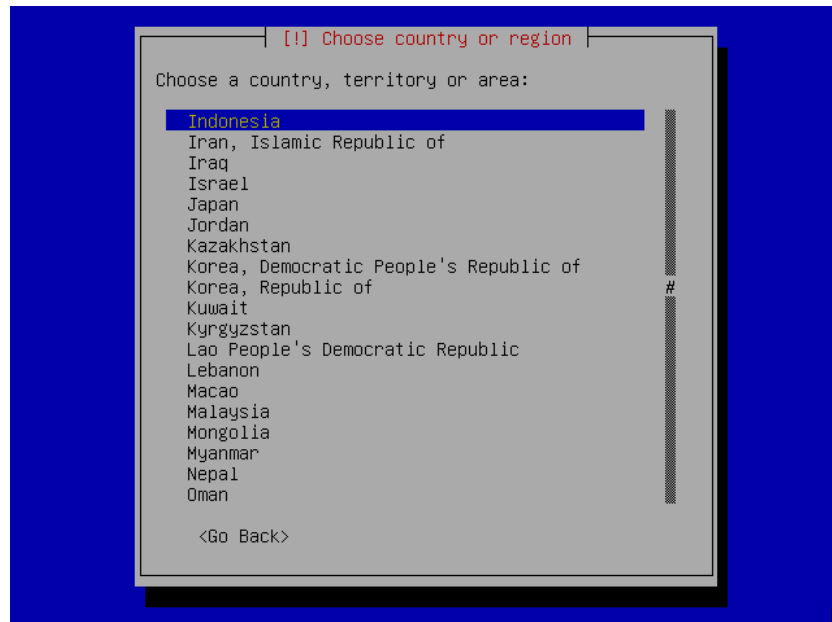
1. Booting dari CD
2. Pada menu inputan pilihan jenis linux, ketikkan linux26



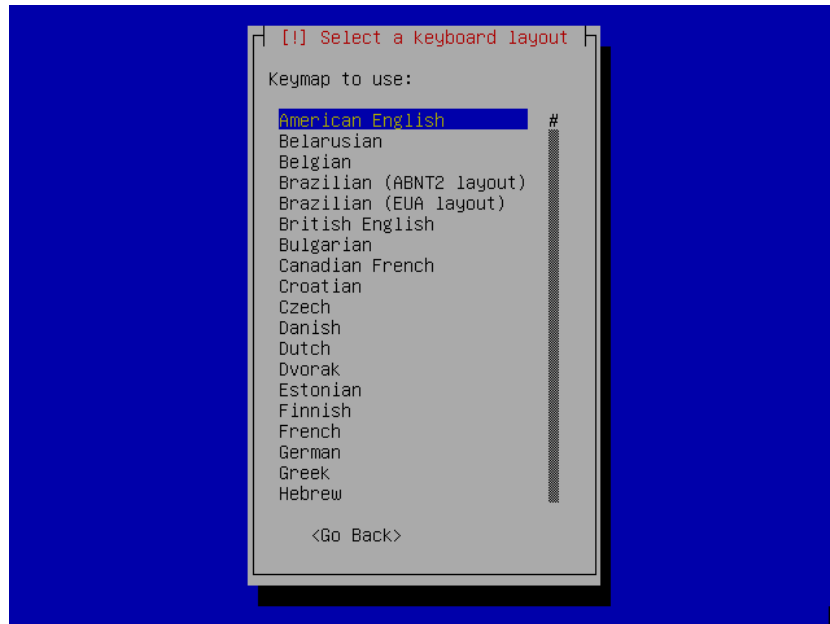
3. Pilihan bahasa -----> american english



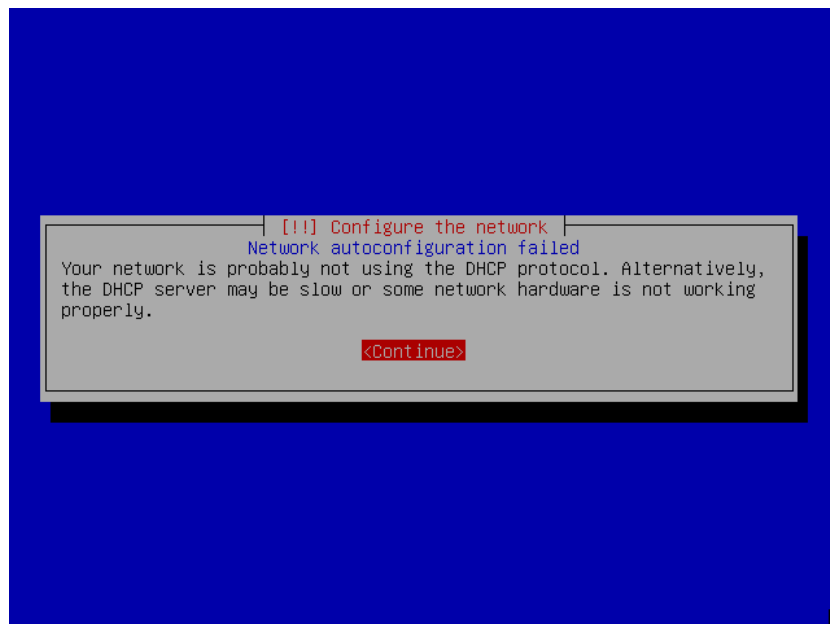
#### 4. Pilihan negara -----> other--> asia --> Indonesia

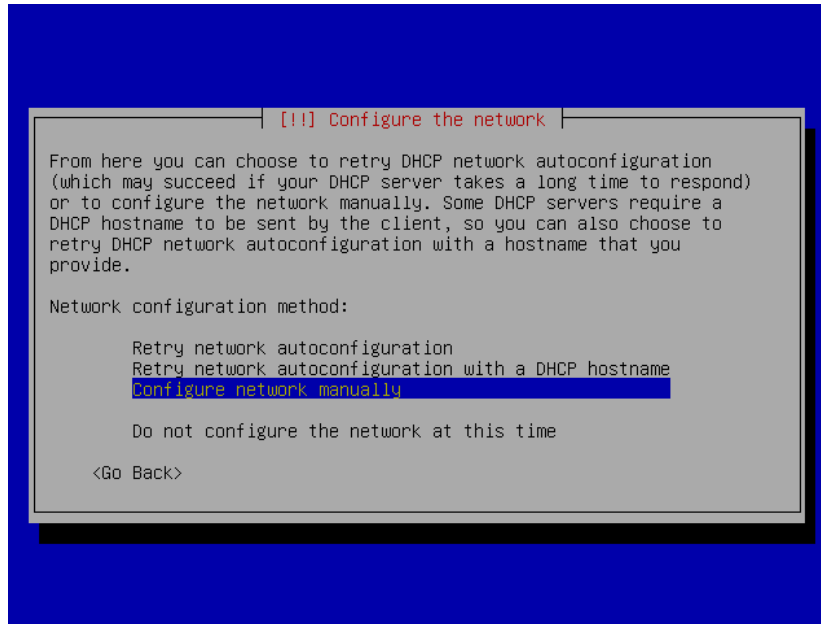


## 5. Pilihan keyboard -----> american English

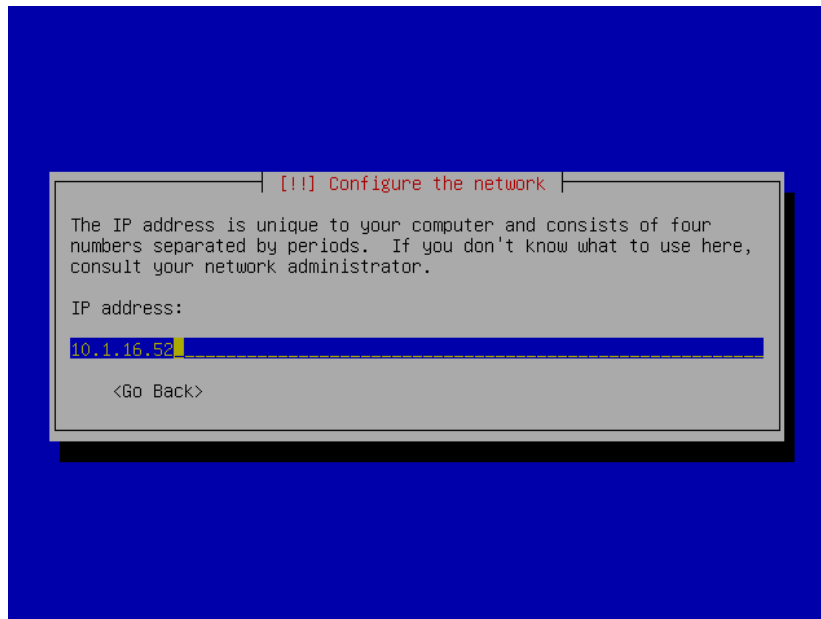


## 6. Configure network manually



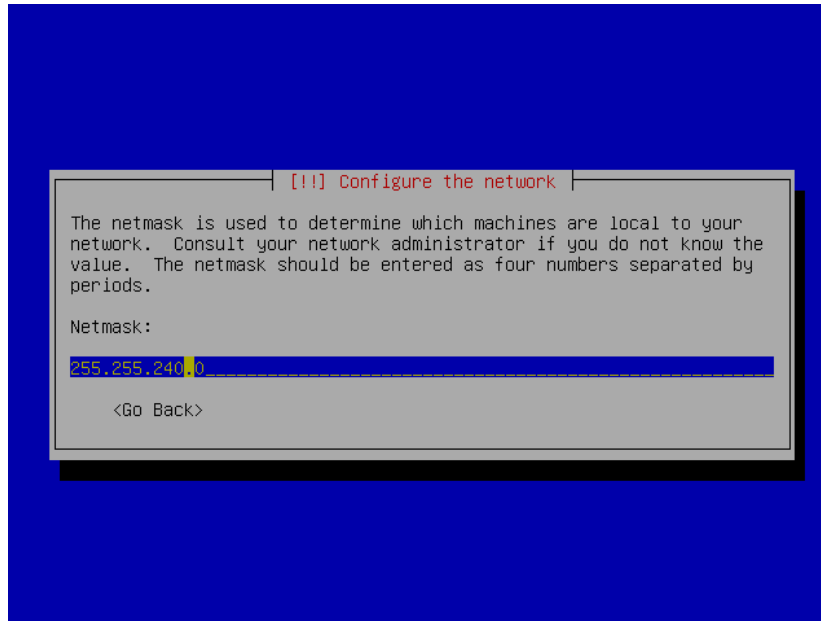


**Masukkan Ip address server**

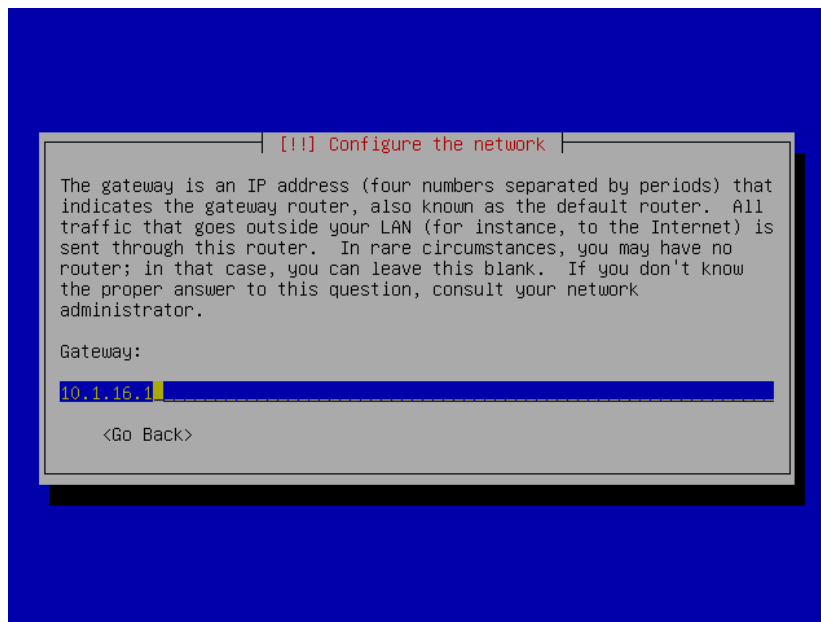


### Masukkan netmasknya:

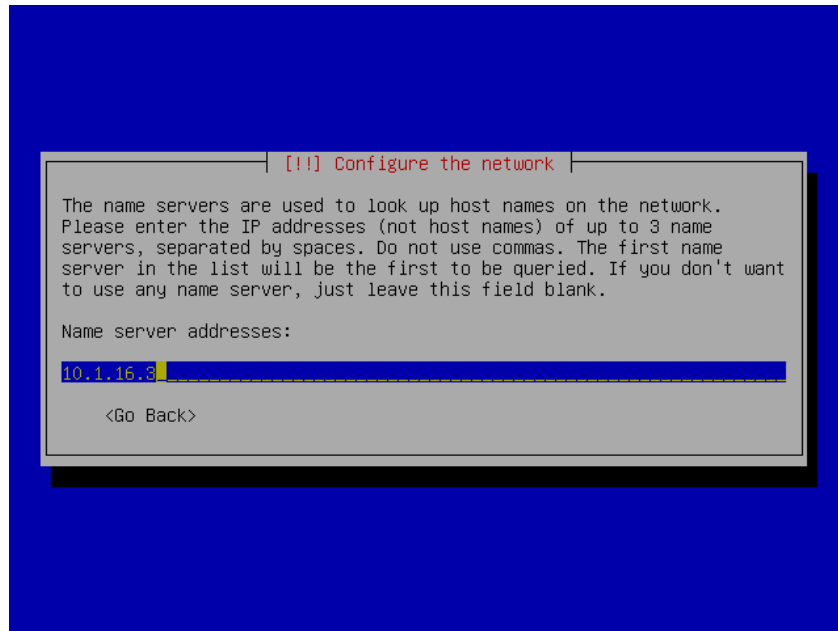
- untuk ip address 10.1.\* -> netmasknya: 255.255.240.0
- untuk selainnya -> netmasknya: 255.255.255.0



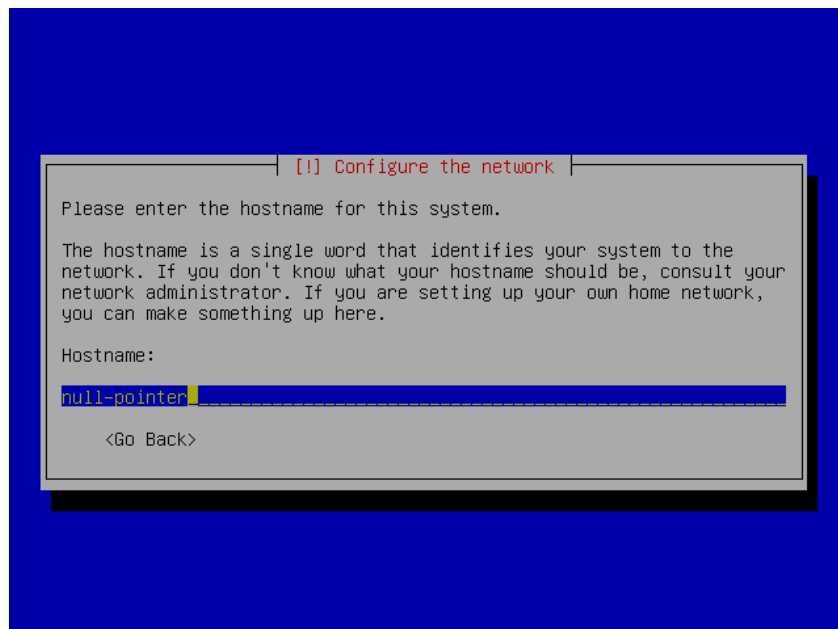
### Masukkan ip address server gateway: (10.1.16.1)



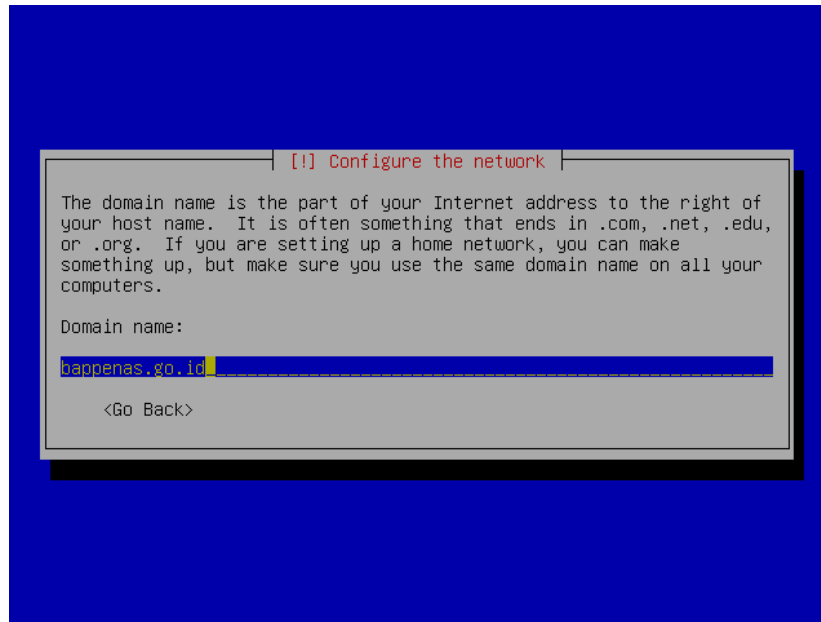
## Masukkan ip address server DNS (10.1.16.3)



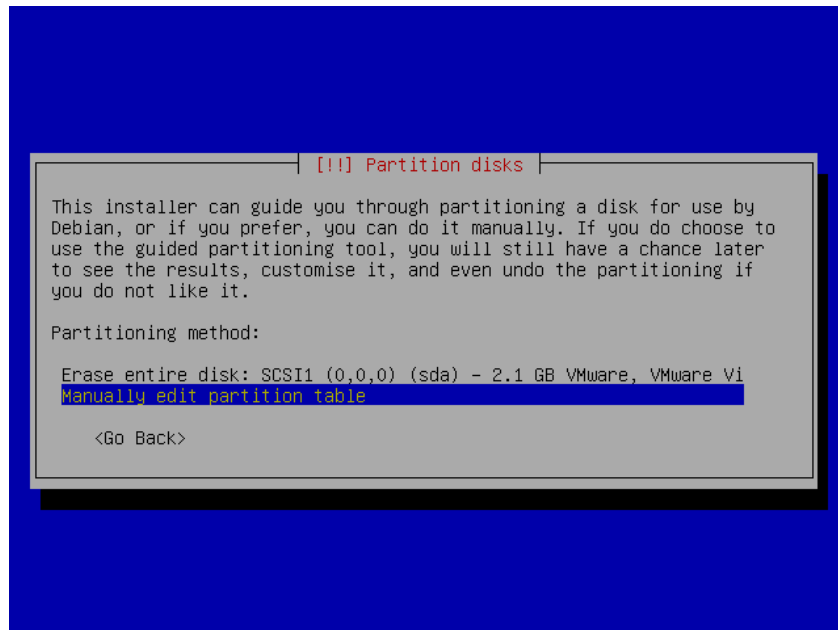
## 7. Masukkan hostname

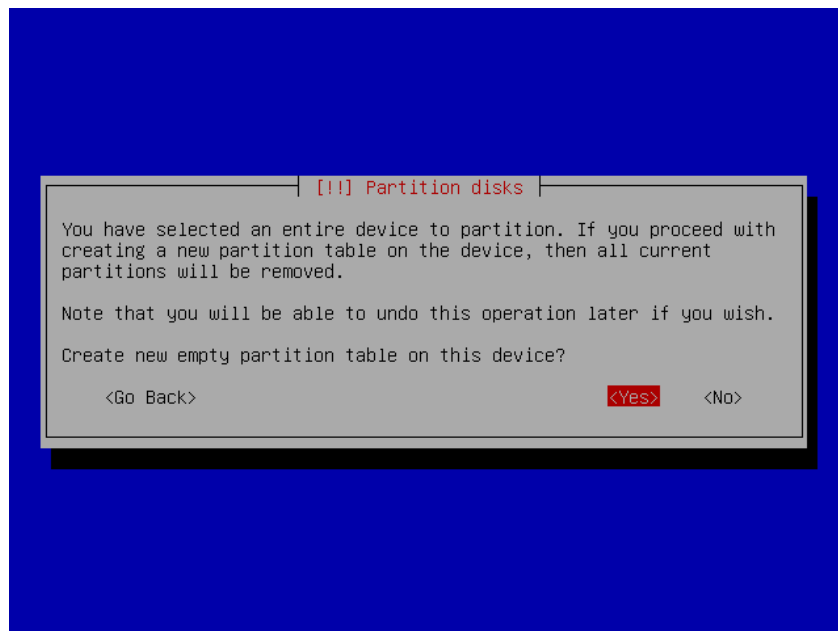
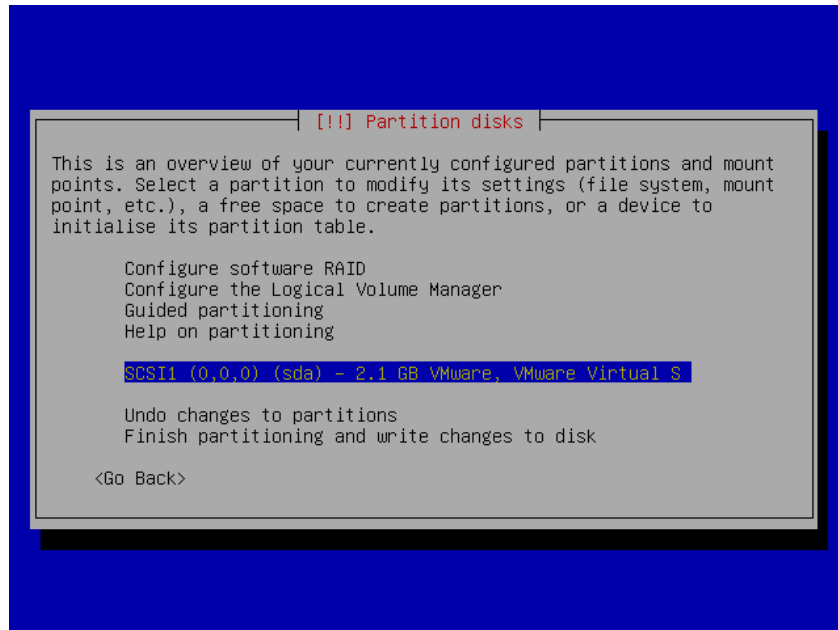


## 8. Masukkan domain name ---> sanyasyari.com



## 9. Metode partisi ----> pilih manually edit partition





## 10. Skema partisi ---->

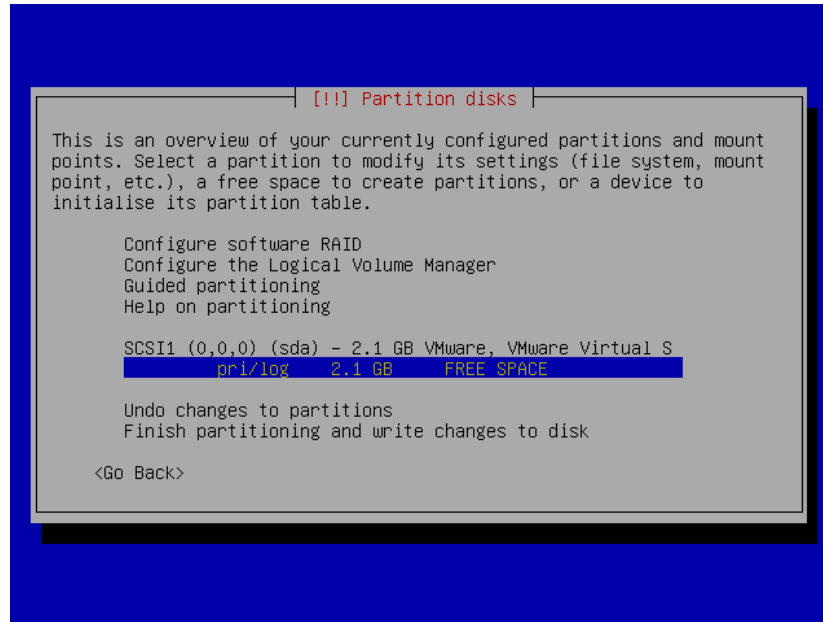
1. root = 5 GB, filesystem = ext3, bootable = on

2. home = 5 GB, filesystem = ext3

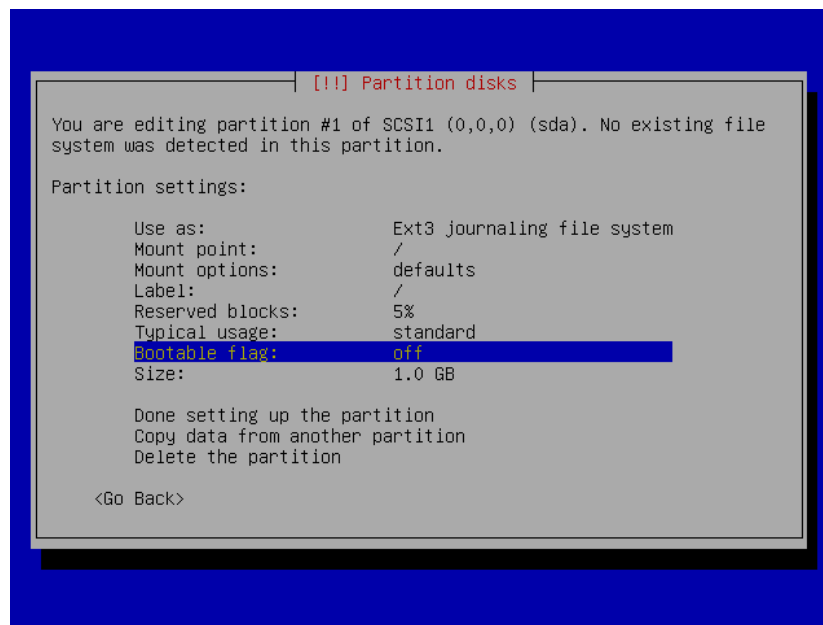
3. var = 10 GB, filesystem = ext3

4. swap = 2 x kapasitas RAM, filesystem = swap

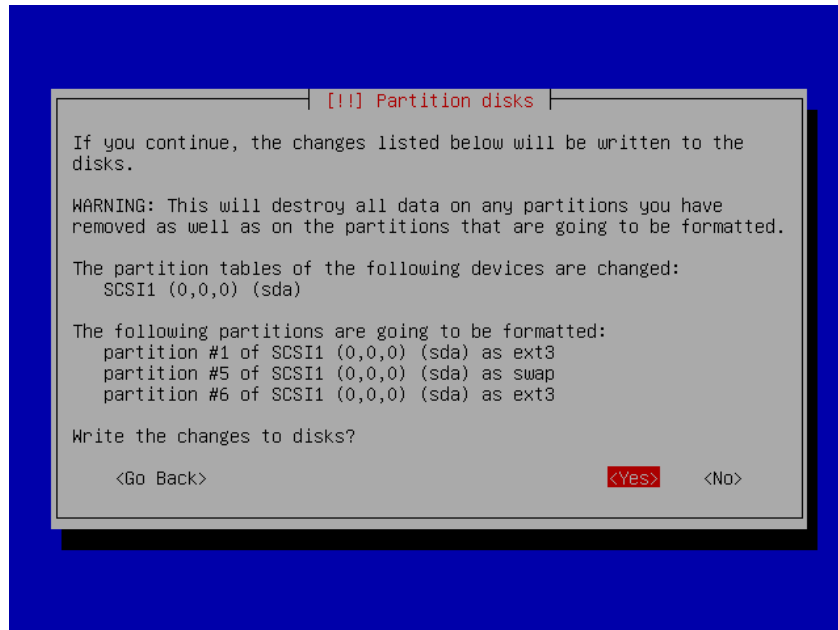
## 5. usr = sisanya, filesystem = ext3



untuk partisi root, dibuat sebagai partisi boot juga, dengan cara mengaktifkan flag *bootable*

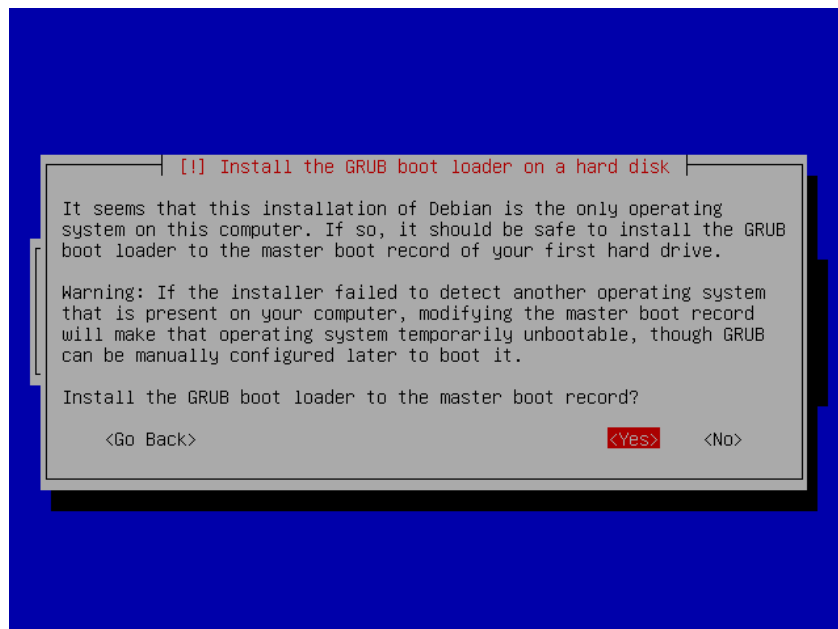


11. Finish partisi dan write changes to disk -----> pilih yes

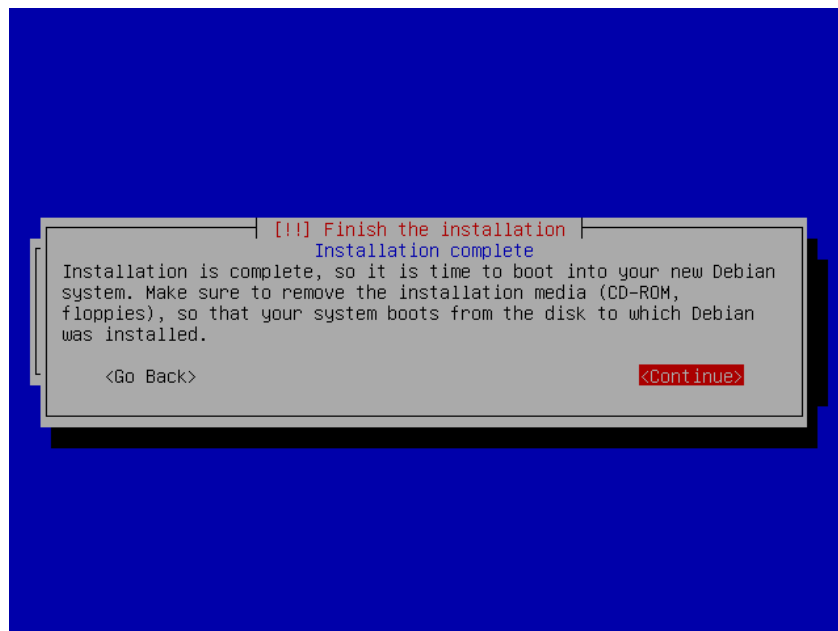


**12. Installing debian base system**

**13. Install GRUB boot loader -----> pilih yes**

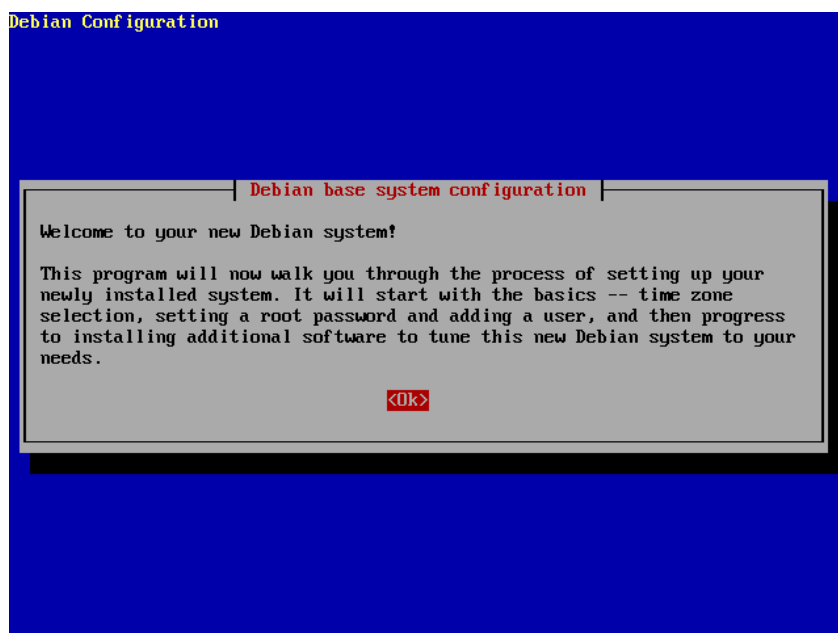


14. Setelah instalasi selesai, ambil CD install -----> pilih continue

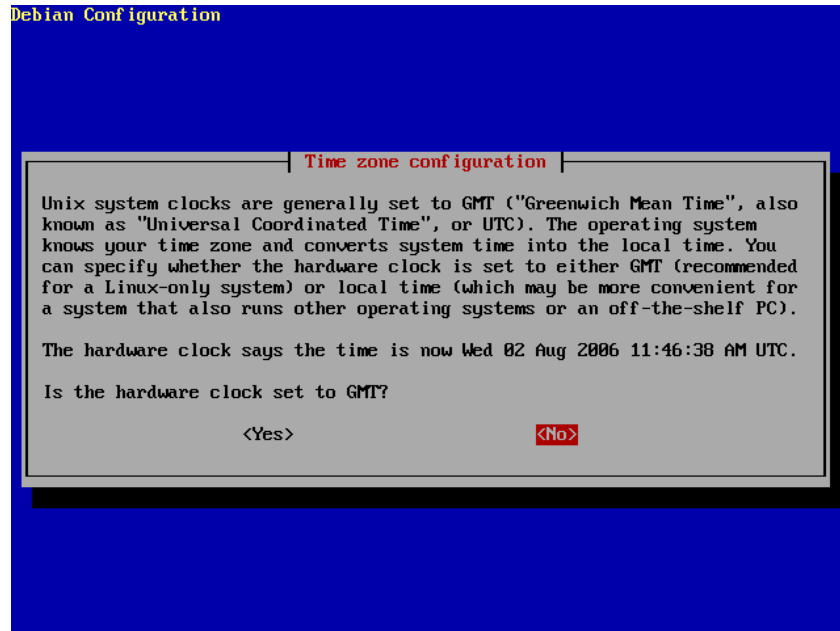


15. Komputer akan booting ulang

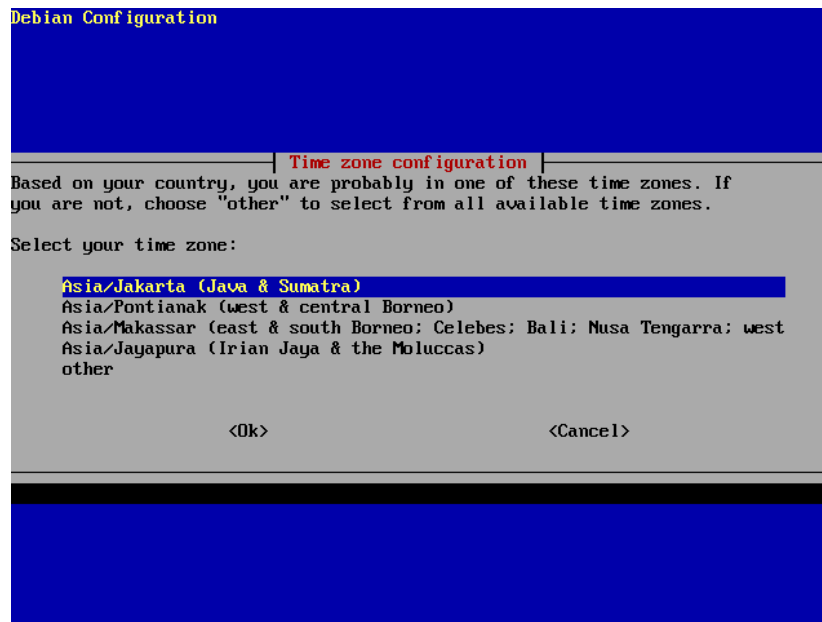
16. Anda akan lihat "Welcome to your new Debian System!" ----> pilih OK



## 17. Konfigurasi waktu -----> pilih no



## 18. Pilih asia/ Jakarta ( java & sumatra )



## 19. Konfigurasi password

*root password*

Debian Configuration

Configuring passwd

You need to set a password for 'root', the system administrative account. A malicious or unqualified user with root access can have disastrous results, so you should take care to choose a root password that is not easy to guess. It should not be a word found in the dictionary, or a word that could be easily associated with you, like your middle name. A good password will contain a mixture of letters, numbers and punctuation and will be changed at regular intervals. The root password is changed by running the 'passwd' program as root.

Note that you will not be able to see the password as you type it.

Root password:

\*\*\*\*\*

<Ok>

<Cancel>

*re-enter password*

Debian Configuration

Configuring passwd

Please enter the same root password again to verify that you have typed it correctly.

Re-enter password to verify:

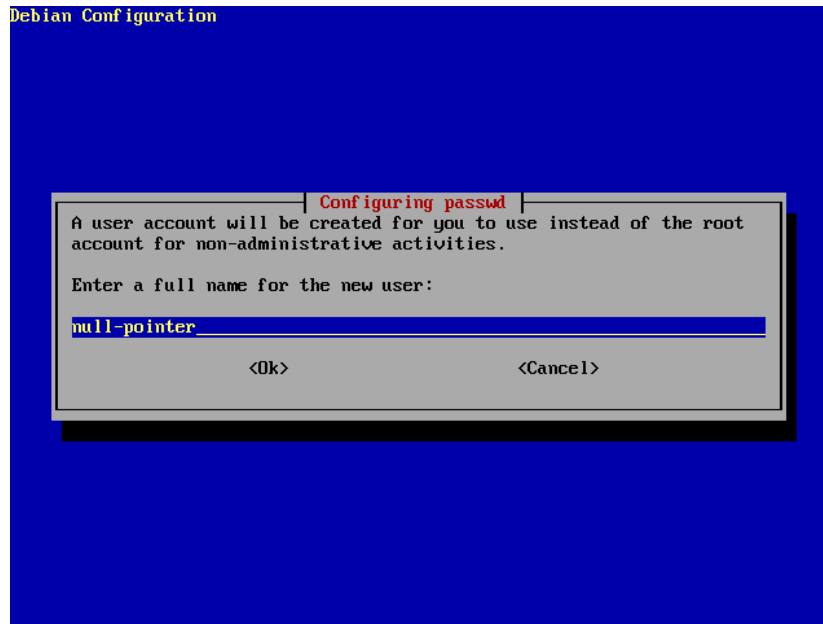
\*\*\*\*\*

<Ok>

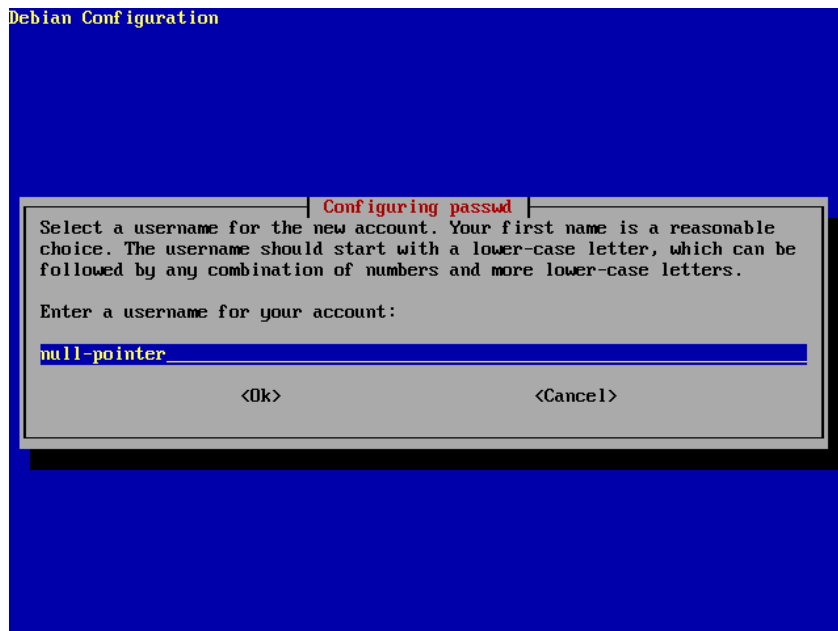
<Cancel>

## 20. Create User baru:

*nama user / full name*



*nama user account*



*user password*

Debian Configuration

Configuring passwd

A good password will contain a mixture of letters, numbers and punctuation and will be changed at regular intervals.

Enter a password for the new user:

\*\*\*\*\*

<Ok> <Cancel>

*re-enter password*

Debian Configuration

Configuring passwd

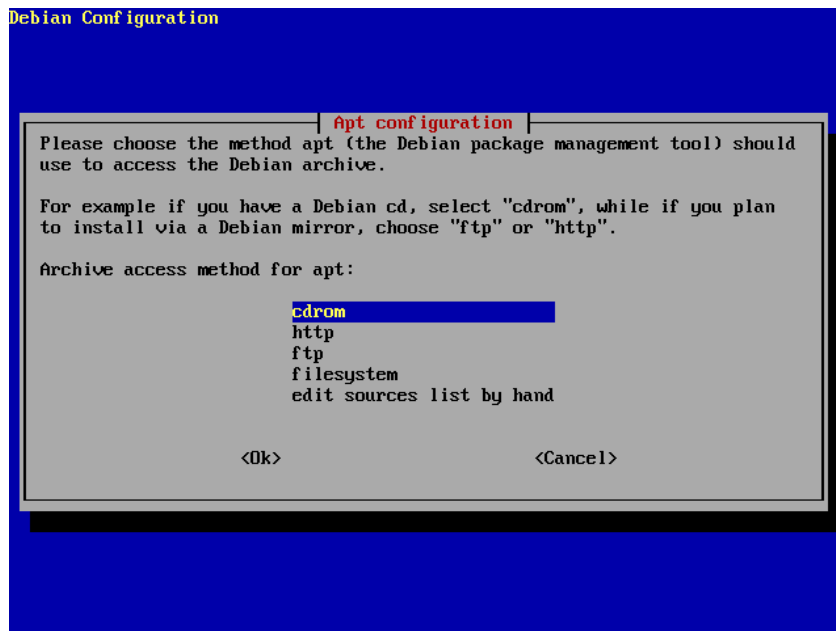
Please enter the same user password again to verify you have typed it correctly.

Re-enter password to verify:

\*\*\*\*\*

<Ok> <Cancel>

## 20. Konfigurasi apt ----->

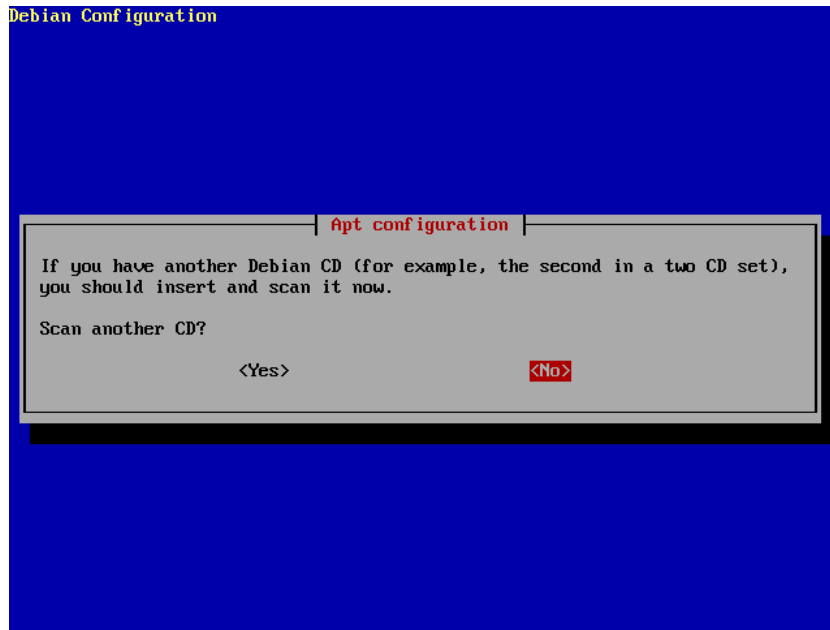


**Masukkan CD DEBIAN dan pilih CDROM**

**CD-ROM device file ----->/dev/cdrom----->pilih OK**

**Tunggu beberapa saat**

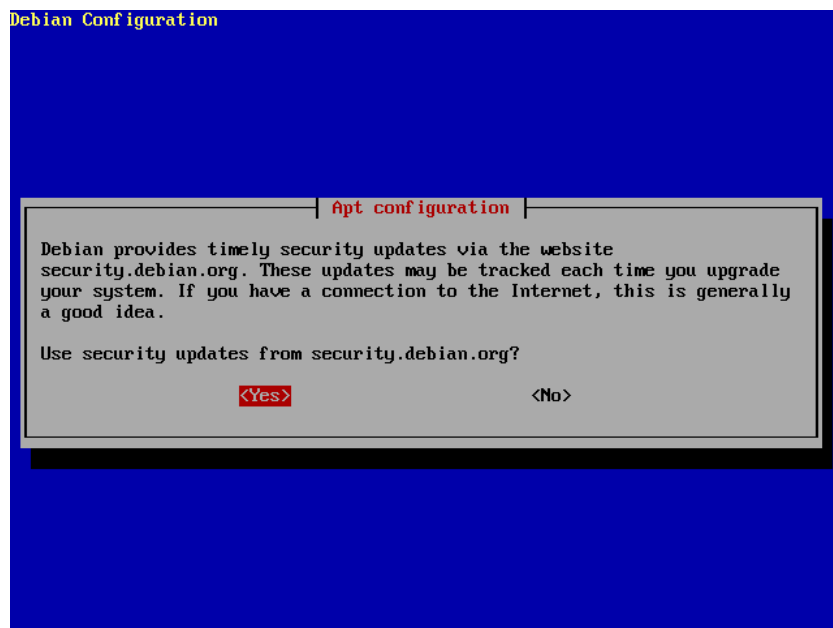
**Muncul scan untuk CD Debian Yang lain ----->pilih no**



Muncul pilihan tentang informasi HTTP proxy -----> kita kosongi --->OK

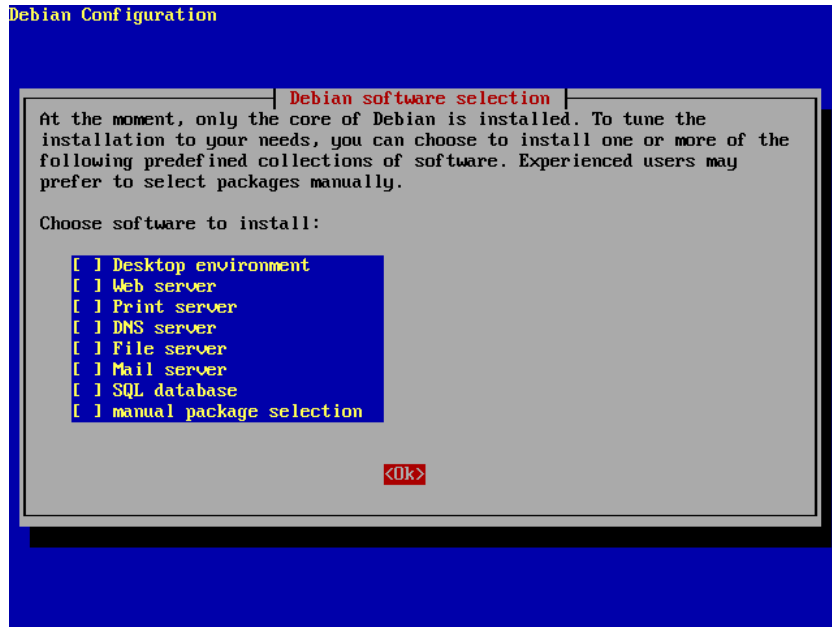
Pada waktu connect security.debian.org, kita CTRL-C untuk cancel

Muncul peringatan untuk access security -----> OK



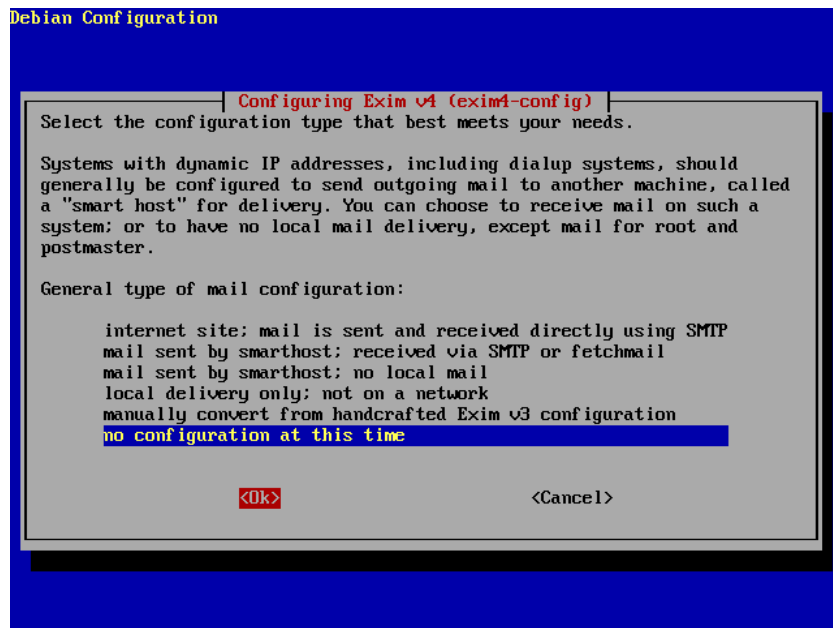
## 21. Debian Software Debian Selection

Pilihan untuk memilih Paket yang akan diinstall (biarkan kosong) -----> OK

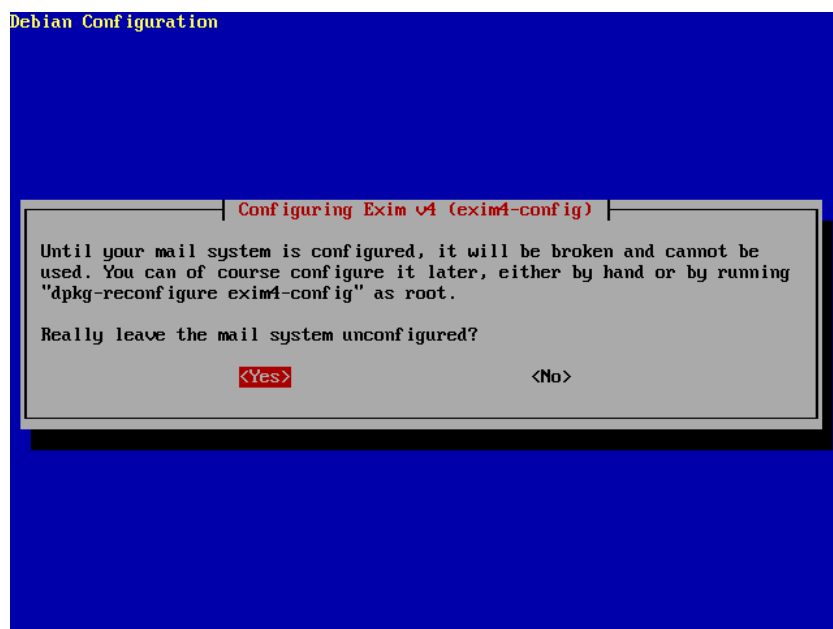


22. Selanjutnya pada anda akan diminta untuk mengkonfigurasi EXIM:

Configuring Exim v4 (exim4- Config) general type of mail configuration ---> no configuration at this time ----> ok

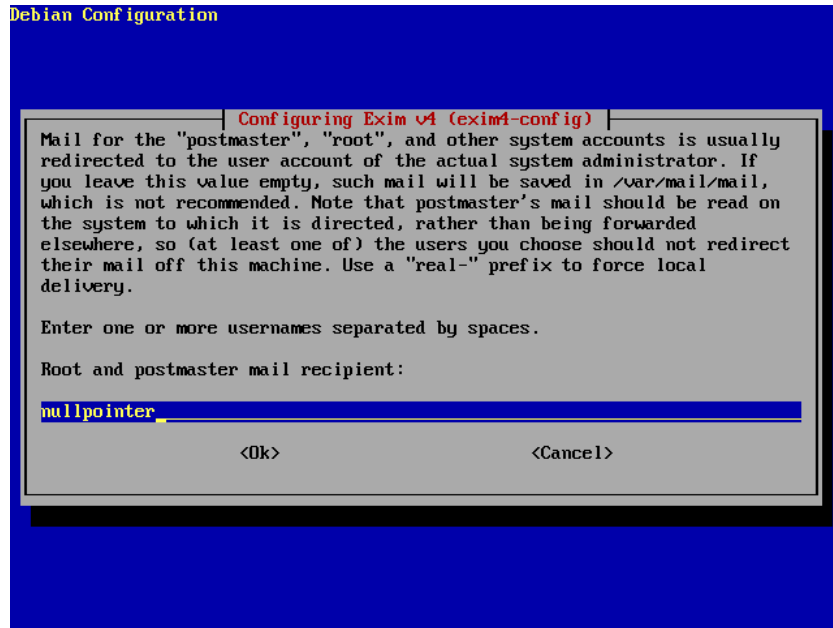


Menu konfirmasi untuk Exim v4 ----->pilih yes



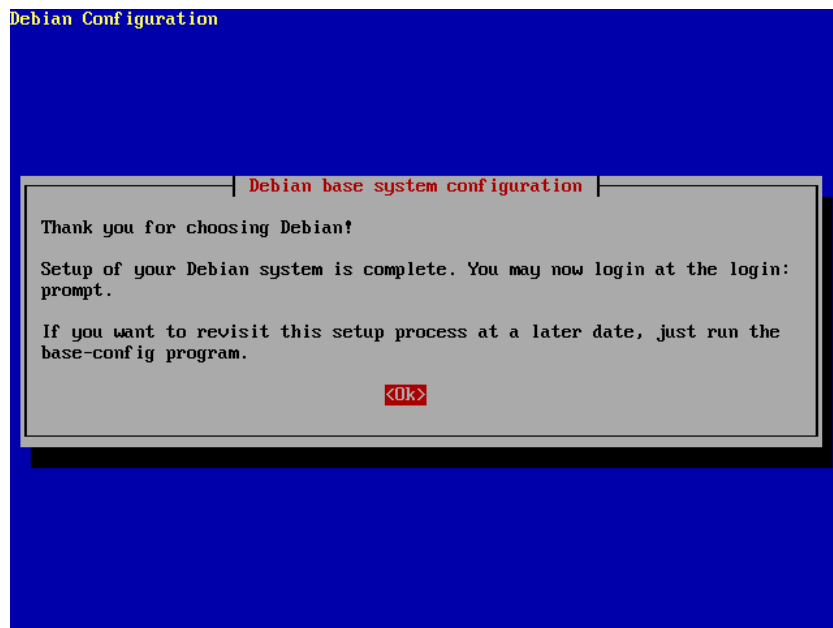
Menu untuk mempertanyakan tujuan mail (root and post mail recipient)

--->ketik sesuai dengan user----->OK



Tunggu untuk reloading exim4 configuration files

23. Anda akan menemui menu Debian base System configuration (Thank you for choosing debian) --->OK



**24. Kemudian masuk pada login ---> ketik root dan masukkan password untuk root**

```
Debian GNU/Linux 3.1 null-pointer tty1
null-pointer login: nullpointer
Password:
Linux null-pointer 2.6.8-2-386 #1 Tue Aug 16 12:46:35 UTC 2005 i686 GNU/Linux

The programs included with the Debian GNU/Linux system are free software;
the exact distribution terms for each program are described in the
individual files in /usr/share/doc/*/copyright.

Debian GNU/Linux comes with ABSOLUTELY NO WARRANTY, to the extent
permitted by applicable law.
nullpointer@null-pointer:~$ su -
Password:
null-pointer:~#
```